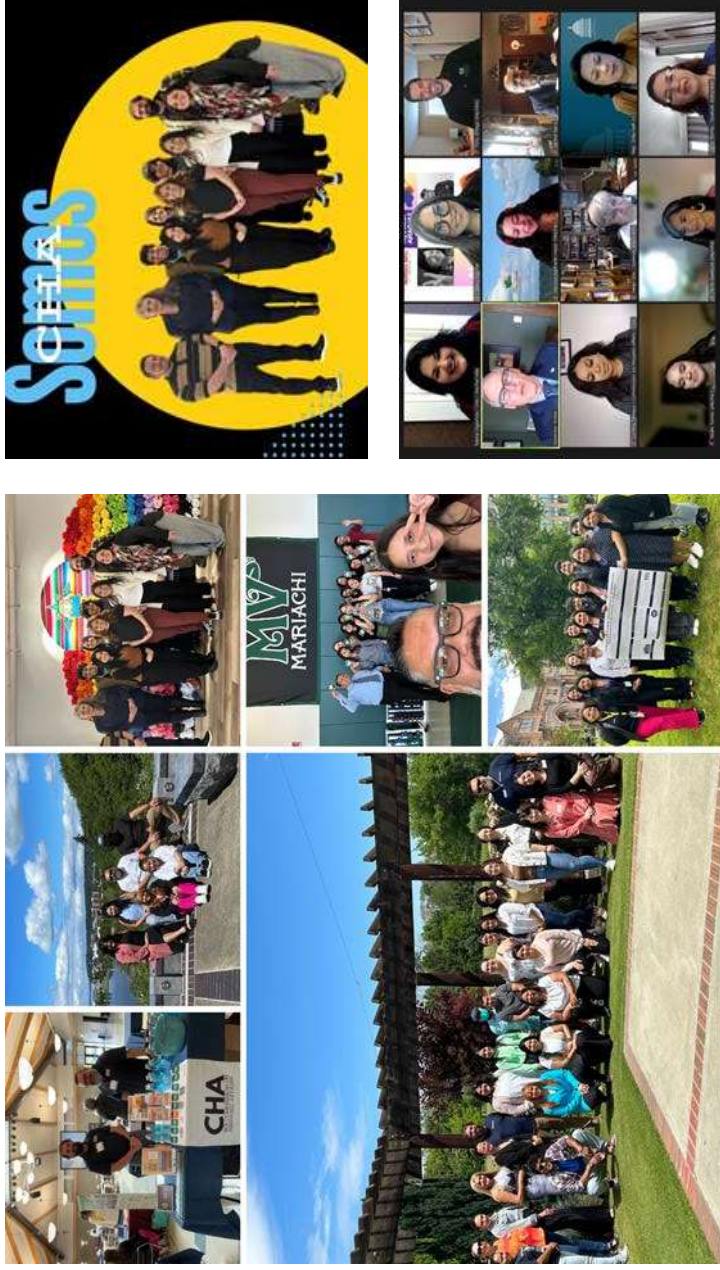






# A little bit about the Commission



## Our Work

- Policy
- Access to Information
- Advising
- Small Business Support

- Col
- R
- Col
- F
- Sa

<b>CHA</b>	
Year Created	1971
Latino Population in WA	13.7%
Commissioners	11
Staff (FTE)	8.5



# Snapshot of Washington State

**7,705,281**

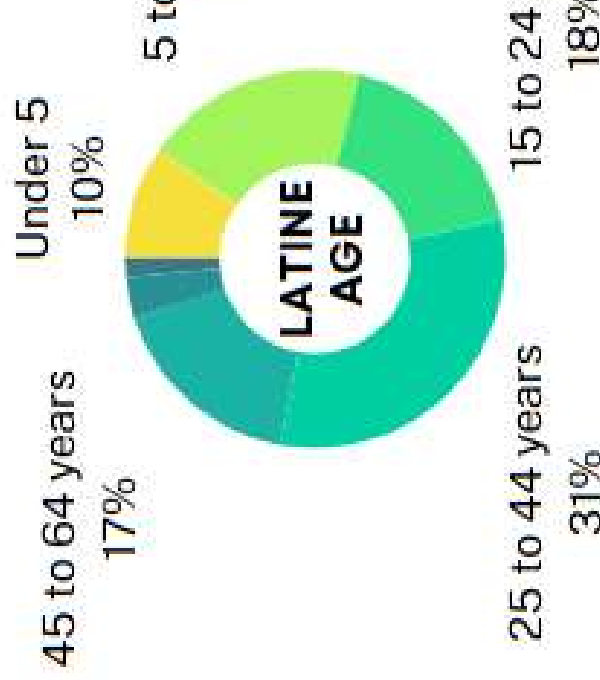
Individuals living in

**Washington state**

according to the 2020 Decennial Census.

**1,059,213**

Hispanic/Latinos living in Washington make up about 14% of the overall population in the state of Washington.



**EMPLOYED BY PRIVATE COMPANIES**  
**65.7%**

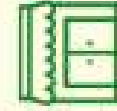


**EMPLOYED BY PRIVATE NON-PROFITS**  
**8.9%**

**OF INDIVIDUALS 16 AND OVER WHO ARE EMPLOYED IN WASHINGTON STATE**



**ARE EMPLOYED BY LOCAL, STATE, & FEDERAL GOVERNMENT**  
**15.8%**



**ARE SELF-EMPLOYED**  
**9.6%**

**5,017,349**

are actively registered to vote in Washington. The largest group are 65 and over making up 20% of the population registered to vote.

# Latino Representation Across the State

Counties with highest Latino population  
(per county population)

- Adams County (64%)
- Douglas County (34%)
- Franklin County (54%)
- Grant County (43%)
- Yakima County (51%)



Counties with highest Latino population  
(of overall state population)

- Clark County (6%)
- King County (23%)
- Pierce County (1%)
- Snohomish County (1%)
- Yakima County (1%)





# Community Development Officers

Connecting, Growing Relationships, Listening



## CONTACT US



**ESMERALDA GARZA**  
Phone: 360.480.6  
Email: esmerald  
Counties: Okano  
Grant, Yakima, K



**AMBER HOEFER**  
Phone: 360.742.1  
Email: amber.ho  
Counties: King, F  
Skamania, Cowl  
Grays Harbor, P



**VÍCTOR "VIC" RODRÍGUEZ**  
Phone: (360) 280  
Email: victor.rod  
Counties: Ferry,  
Spokane, Frankl  
Columbia, Garfic



**CHA Home Off**  
Phone: (360) 725  
Email: hispanic@  
Counties: Whatc  
Jefferson, Clalla  
Kitsap

## ABOUT THE TEAM

The Community Development Team is embedded and connected in the regions that we serve. We center relationship-building and trust. The CDOs are building connections with program staff, community-based organizations, elected officials, faith-based and informal community leaders, as well as fellow colleagues at all the state agencies.

## Rapid Response Hubs

- Our goal is to aid in the access of resources, tools and information. We welcome suggestions for the type of information and resources you would like us to share.
- Available in English and Spanish
- Community Resources



### RAPID RESPONSE HUB

In times of change, we all need a little help finding the right information

**WELCOME TO THE RAPID RESPONSE HUB. OUR GOAL IS TO AID IN THE ACCESS OF RESOURCES, TOOLS AND INFORMATION. WE WELCOME SUGGESTIONS FOR THE TYPE OF INFORMATION AND RESOURCES YOU WOULD LIKE US TO SHARE.**



Have questions or need more information? Give us a call!

Office: 360-725-5661

Email: [hispanic@cha.wa.gov](mailto:hispanic@cha.wa.gov)

[cha.wa.gov/rapid-response](https://cha.wa.gov/rapid-response)



# Primary Topics in the RRH





# Centralizing State-Wide Information

## Executive Orders

The following executive orders most impact the latino community.

### FEDERAL

[Declaring a national emergency at the border](#)

["Clarifying" the military's role in border security](#)

[Designating criminal cartels as terrorists](#)

[Suspending refugee resettlement](#)

[Ending birthright citizenship](#): This action has already seen legal challenges.

[Enhance vetting and screening](#)

Learn more

### STATE

EO 25-05, 02/04/2025 - [Establishing a data center workgroup](#)

EO 25-04, 01/27/2025- [Protecting immigrant families and responding to family separation](#)

EO 25-03, 01/15/2025- [Improving Transparency and Building Efficiency in the State's Permitting and Licensing Processes](#)

EO 25-02, 01/15/2025- [Assessing Regulatory Efficiency and Addressing Washington's Affordable Housing Crisis](#)

EO 25-01, 01/15/2025- [Strategic Convening to Protect Access to Reproductive Health Care](#)

Learn More

# WASN Immigrant & Refugee Hotline

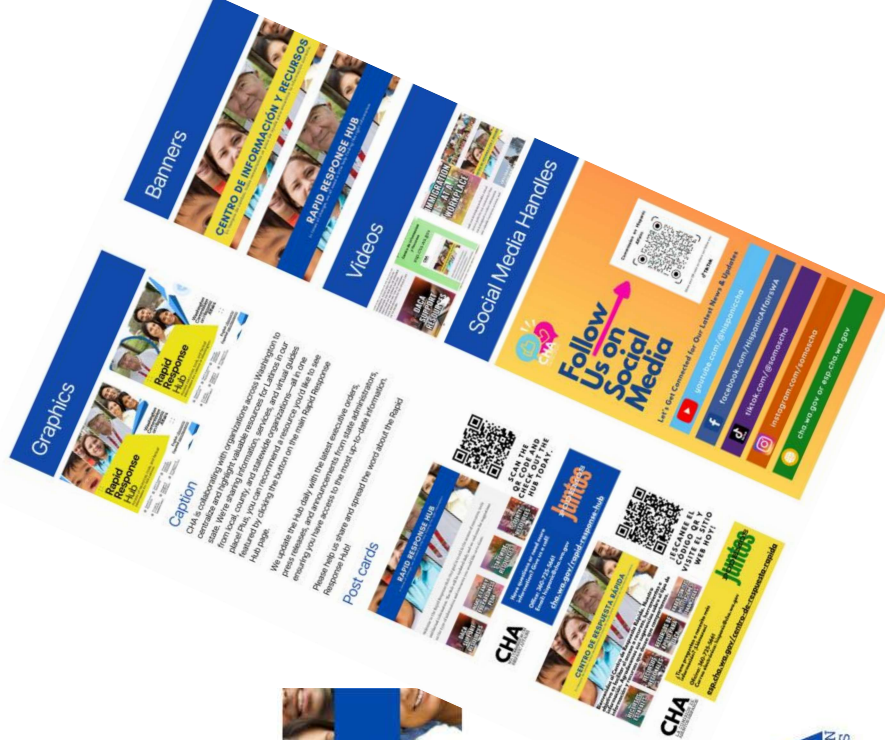
1-844-724-3737

## **ABOUT THE HOTLINE (ALSO KNOWN AS THE DEPORTATION DEFENSE HOTLINE):**

- STATEWIDE HOTLINE FOR IMMIGRANTS AND REFUGEES IN WA
- FOCUSES ON UNDOCUMENTED IMMIGRANTS, SERVICES ALL RACES, ETHNICITIES, GENDER, SEXUAL ORIENTATION, AND CULTURES
- IMMIGRATION INFO: REPORT IMMIGRATION ENFORCEMENT ACTIVITIES
- COMMUNITY RESOURCES: REFERRALS FOR HOUSING, FOOD, UTILITIES, HEALTHCARE, LEGAL HELP WITH WORKING FAMILIES TAX CREDIT & ITIN; CONNECTS TO LOCAL SUPPORT NETWORKS



# Feel free to share the hub via your channels



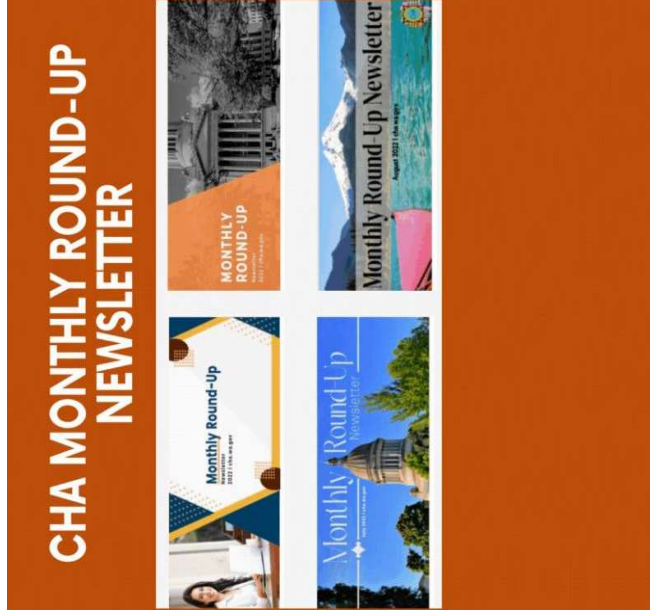
# Rapid Response Hub

360-515-6101  
hispanic@cha.wa.gov  
cha.wa.gov or esp.cha.gov



- ✓ Data Support
- ✓ Resources
- ✓ Make a Family Preparedness Plan
- ✓ Statewide Resources
- ✓ County Resources
- ✓ Talk to Your Family
- ✓ Institutions
- ✓ Refugees & Immigrants
- ✓ Information
- ✓ Emotional & Mental Health Support
- ✓ Immigration and Naturalization Service
- ✓ Workplace
- ✓ Small Business Resources
- ✓ Economic Development
- ✓ Resiliency Planning

# Let's be social!



Subscribe to our newsletters  
by visiting [cha.wa.gov](http://cha.wa.gov)!





# Let's Connect!

---

**Amber Hoefler**

**Community Development Officer**

Amber.Hoefler@cha.wa.gov

C: (360) 742-1759 | O: (360) 725-5661

**CHA Headquarters**

Hispanic@cha.wa.gov

O: (360) 725-5661

**CHA**  
**WA COMMISSION**  
**HISPANIC AFFAIRS**